

OCM™

COMPREHENSIVE WOUND CARE USE DAY ONE NO NEED TO WAIT

OCM™ is a first in class, HCP administered, drug-device: delivering complete and personalized therapy to address all phases of wound healing:



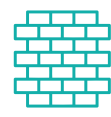
Reduce
biofilm impact



Decrease
inflammation



Increase
proliferation



Support
remodeling

Indications include:

OCM™ is indicated for the management of wounds including:

- Partial and full-thickness wounds
- Pressure ulcers
- Diabetic ulcers
- Chronic vascular ulcers
- Venous ulcers
- Dehisced wounds

Contraindications

Sensitivity to fish or cod liver oil. Third-degree burns.

CLINICAL EVIDENCE SHOWS 60% PAR* IN 4 WEEKS

*Percentage Area Reduction

CASE STUDIES

DIABETIC FOOT ULCER WITH CHARCOT DEFORMITY



WEEK 1



WEEK 3



WEEK 9

Wound history & prior therapies:

4 months non-healing. Collagen powder & off-loading boot

Omeza:

Closed in 9 weeks

VENOUS LEG ULCER



INITIAL WOUND



WEEK 2



WEEK 5

Wound history & prior therapies:

7 months non-healing. Silver alginate & amnion products

Omeza:

Closed in 5 weeks

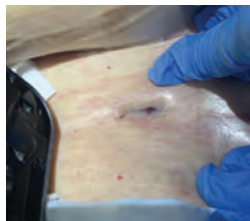
TUNNELING ABDOMINAL WOUND



WEEK 1



WEEK 3



WEEK 7

Wound history & prior therapies:

Over 2 years old. Standard of care in skilled nursing facility

Omeza:

Closed in 7 weeks

VENOUS LEG ULCER



WEEK 1



WEEK 8



WEEK 11

Wound history & prior therapies:

5 months non-healing. Compression, unna boots, fish skin graft

Omeza:

Closed in 11 weeks

*N=84 as of 2023

*Case studies shown have utilized OCM, Omeza Lidocaine Lavage, and Omeza Skin Protectant

HOW DOES OCM™ WORK?

AN HCP ADMINISTERED DRUG-DEVICE

- First in class formulation with multi-modal mechanisms of action
- Treats most types of chronic wounds and patients

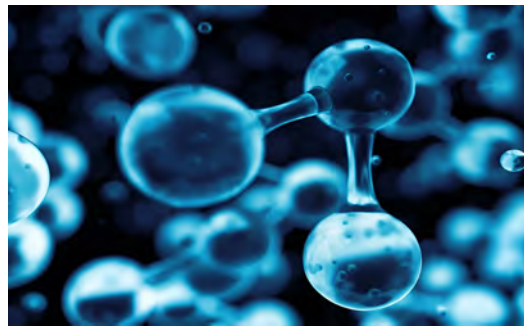
OCM™ IS CREATED THROUGH A PROPRIETARY PROCESS

- An amorphous solid covers the wound bed (including tunnels)
- This malleable sheet provides support for comprehensive healing

CONTAINS:

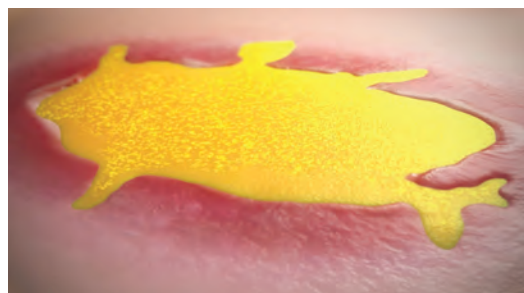
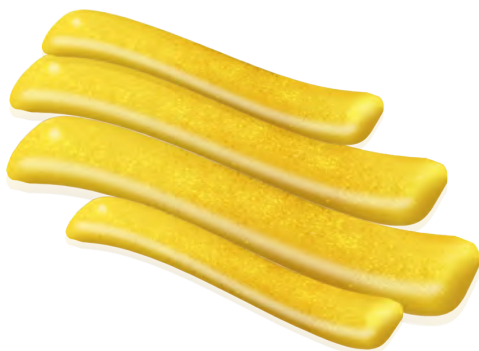
COLD WATER FISH PEPTIDES

- Building blocks for tissue regeneration
- Cell signaling molecules



PHARMACEUTICAL-GRADE COMPONENTS

- Natural, non-cytotoxic components known to be antimicrobial
- Reduces biofilm impact
- Reduces inflammation
- Increases proliferation
- Supports remodeling



OCM™ is a malleable solid to fit any wound shape

HCPCS CODE:

OCM™ CMS Code: A2014

REIMBURSEMENT:omezareimbursementsupport.com
844-375-4062

OCM™ CONSIDERATIONS FOR USE

DOSAGE AND HANDLING:

- OCM™ is HCP administered using aseptic techniques
- Each vial covers approximately 18 cm² or 4cm x 4.5cm area
- Apply maximum 2 OCM™ devices per day; maximum 4 OCM™ devices per week
- Reapplication determined by HCP
- Reapply when OCM™ has been naturally incorporated into the wound bed

OTHER CONSIDERATIONS:

- Proper wound bed preparation and dressings are necessary for optimal results
- After application, cover with non-stick dressing and secure with steri-strips
- Use offloading and other wound care procedures as appropriate
- OCM™ can be used with NPWT and HBOT